

On The Disk...

A run-down of what's included on the free disk with this issue

Subscribers to *The Delphi Magazine* receive a free disk with each copy, packed with goodies. This includes the source code and example files for all the articles in the current issue.

But, there's much more too! We've sifted through a great many tools, components and other Delphi add-ons to bring you some of the best shareware and freeware material available, as outlined below. The headings are the directory names where you will find the files on the floppy disk.

➤ **DRBOB1**

Bob Swart's collection of 11 Delphi Experts: About Screen, FileOpen, SysUtils Info, Resource Info, Project Info, DLL Source, Component, Splash Form, Table Form, Dynamic DLL Expert Loader, 16- to 32-bit Resource Converter, C DLL Header Converter (1.03).

➤ **EZDSL200**

Easy Data Structure Library from Julian Bucknall, new version 2.00 now supports both Delphi 1 and Delphi 2. The EZDSL units provide an OOP interface for classical data structures for Delphi: stacks, queues, lists, binary trees and so forth. For those migrating from Borland Pascal 7 a replacement for TCollection is also provided.

➤ **INTERNET**

Listing of Delphi-related World Wide Web and ftp sites. Sorry we missed this off last month's disk!

➤ **ISGSEC2**

The TISGSecure component provides security facilities for your application. Security is initialized by the developer by creating security files for an application. The security files are Paradox files which are protected by a master password. Access to the tables is secured through this master password which is created and maintained by you. Security is provided by adding constants which describe some access level then

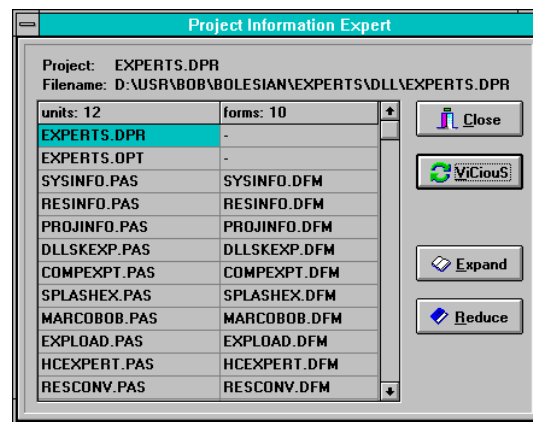


➤ *Left: Paul Warren's password protection system in action*

➤ *Right: Bob Swart's SysUtils information expert*



➤ *Below: Bob Swart's project information expert shows all the files in your Delphi projects*



➤ *Below (top): Bob Swart's resource info expert*

➤ *Below (bottom): Bob Swart's DLL source expert will generate skeleton source for a DLL*

specifying which users have rights to which constants.

➤ **PASCAL**

How to obtain back issues of *The Pascal Magazine*: details of the contents of each issue and an order form as an Adobe Acrobat file.

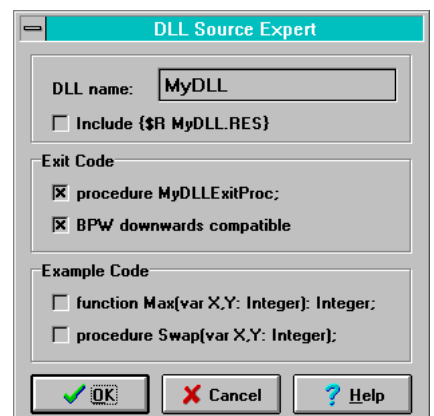
➤ **PASSWORD**

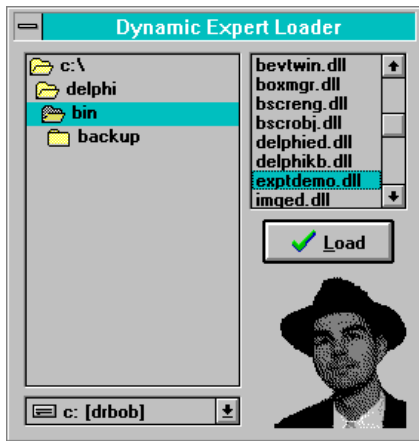
A DLL-based password protection system from Paul Warren.

➤ **TASBVOLVE**

TASBoolValve component from Stewart McSporrán, which implements a binary state pipe valve (binary state as opposed to a real valve where the state of the valve

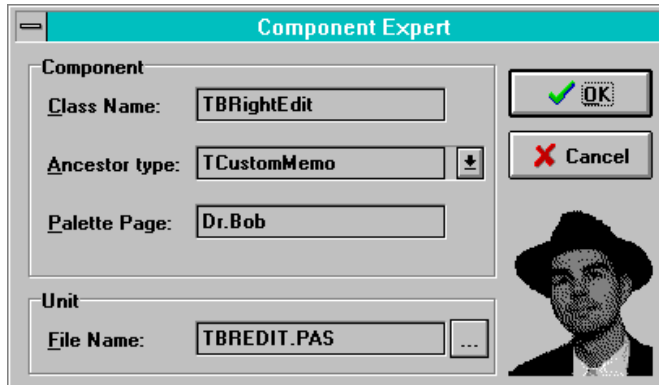
Mem: 20966 Kb (Base: 45728) + System: 40% User: 63% GDI: 40%





➤ Above:
Bob Swart's
dynamic
expert
loader

➤ Right:
Bob Swart's
component
skeleton
code expert



is measured as a percentage of fully open. Freeware.

➤ **TSERIAL**

This is a simple shareware serial component from R J Crowther that saves you having to tangle with the Windows Comms API functions to handle a serial port. Only basic serial comms are provided – no terminals, protocols etc.

➤ **USERGPS**

List and contact information for Delphi User Groups. Sorry we missed this off last month's disk!

Important Note!

Always, but *always* make a backup copy of your COMPLIB.DCL file (located in directory delphi\bin) *before* you take the plunge and install *any* new component into Delphi!

Sometimes component installation can trash your COMPLIB.DCL and you will then be left with an inoperative Delphi and (after copying the default file over from the distribution CD-ROM or floppies) will have to re-add *all* your favourite extra components. You have been warned!

Send In Your Code...

If you have some carefully crafted routines which you think may be of use to others, why not send them in by mail or (zipped) by CompuServe email (to 70630,717) marked for the attention of the Editor, so we can consider them for a future free disk?